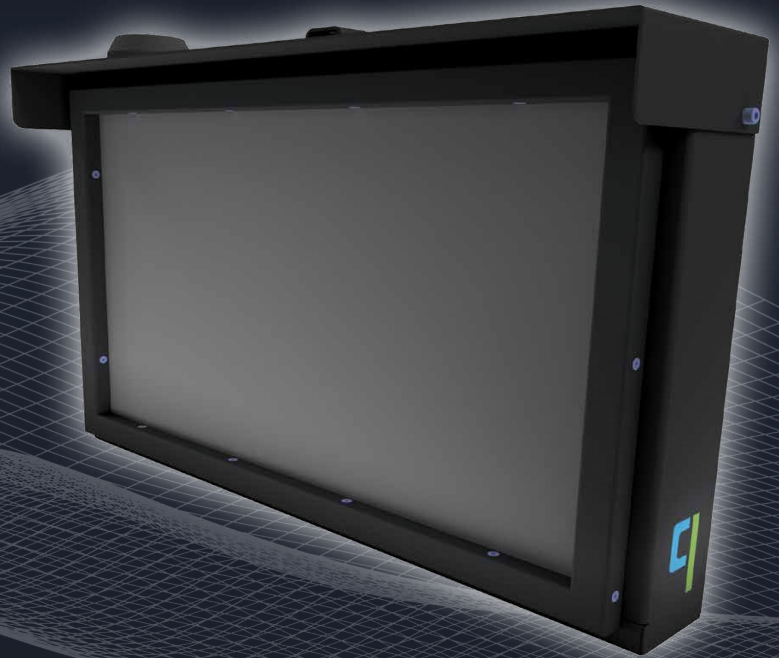




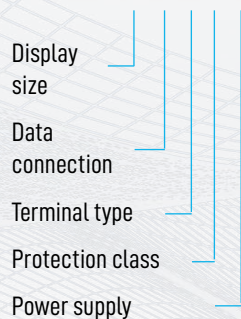
Full-HD Touch Operator Terminal for Harsh Environment



System Highlights

- Multi-touch operator terminal for modern software solutions in full-HD resolution
- Touch operation with finger, pen or special work glove
- Optional additional satellite terminal for ergonomic working conditions
- Robust steel casing for harsh environment in dusty or hot production plants
- Optional exchangeable 3 mm protective glass
- Integrated industrial PC (SBC) with free choice of operating system
- Fanless design, 3rd party certification for dust-proof design
- Suitable for moisture-prone areas

Example for model key
qonsole-24-D0-A-I6-P0



Display size

19	19" Full-HD Display
24	24" Full-HD Display
42	42" Full-HD Display
55	55" 4K Display
X	Other size for customer specific solution

Data connection

D0	Cat6A Ethernet
D1	Cat6A Ethernet and W-LAN
D2	Cat6A Ethernet and LTE
D3	Cat6A Ethernet, W-LAN and LTE

Terminal type

A	Complete terminal incl power supply and SBC
B	Satellite terminal for connecting to a main terminal

Protection class

I4	IP 44 casing without protective glass
I6	IP 65 casing with 3 mm protective glass

Power supply

P0	Power supply over 230 VAC C16 plug
P1	Power supply over PoE

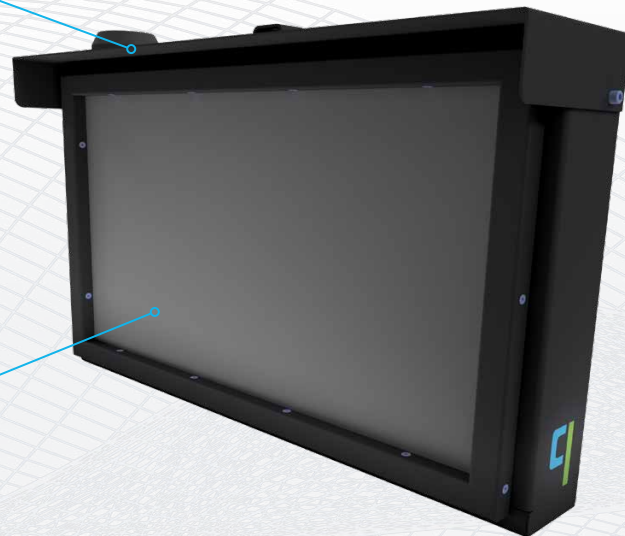
Specification

Extensions

W-LAN	802.11a/b/g/n/ac atandard, 2.4+5 GHz, external antenna
LTE	LTE Cat 6 (300/50 Mbps down/up), internal SIM-Slot, external antenna
others	RS-232, HDMI on request

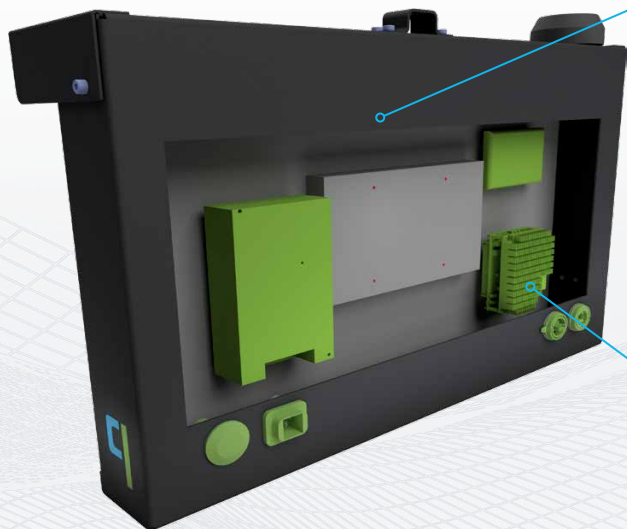
Display

Technology	Projected-capacity touch technology (PCAP)
Resolution	1920 × 1080 px (19" – 42") 3840 × 2160 px (55")
Sizes	19", 24", 42", 55" (other sizes from 10" – 98" on request)



Environment

Protection class	IP 44 (without glass cover) IP 65 (with glass cover) fanless design
Conditions	0 – 50 °C external temperature max. 80 % humidity



Connections

Power supply	230 VAC over C16 plug 42.5 – 57 VDC over PoE 802.3bt (optional)
Data connection	Ethernet (CAT6) USB 2.0

Casing

Dimensions (without rear connecting plugs)	19": 494 × 299 × 88 mm 24": 635 × 407 × 105 mm 42": 1075 × 667 × 110 mm 55": 1305 × 780 × 145 mm
Mass (with glass)	19": 11.5 kg, 24": 23 kg 42": 51 kg, 55": 65 kg
Surface	Powder coated RAL 5004 (other colors on request)

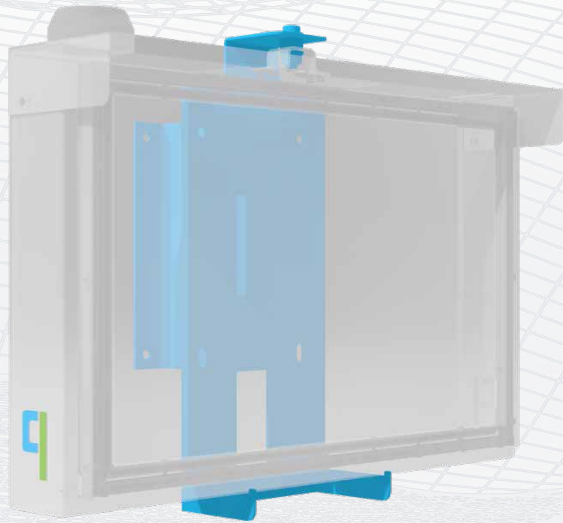
Hardware platform

CPU	Intel® Atom 4×2.4 GHz (upgrade on request)
RAM	4 GB / 8 GB (upgrade on request)
HD	120 GB SSD

Software platform

Operating systems	Windows 10 Linux
-------------------	---------------------

Mounting possibilities



Rigid wall mount (WM)

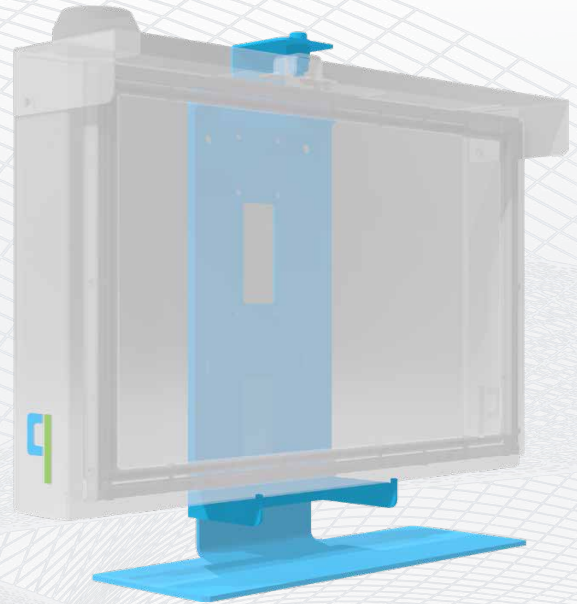
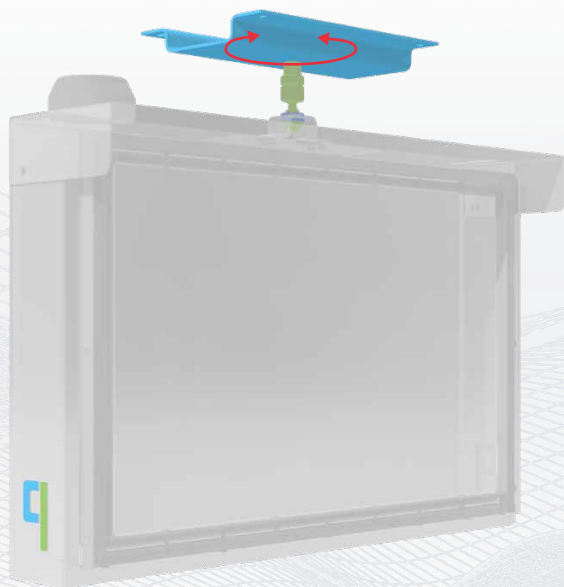
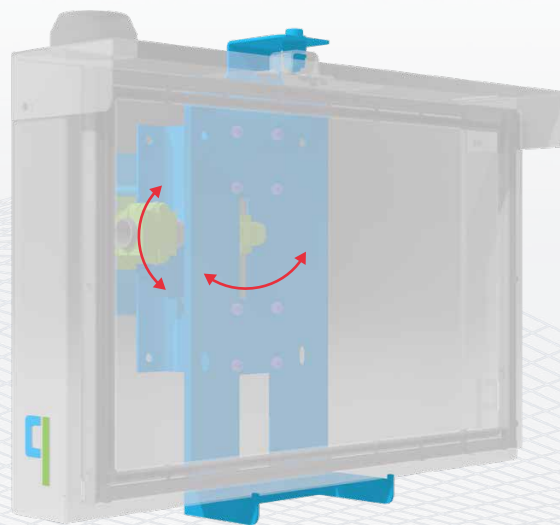


Table mount (TM)



Ceiling mount 360 ° rotatable (CM)



Swiveling and tilting mount (IM)



qontour engineering GmbH
Peter Tunner Straße 19
8700 Leoben, Austria

office@qontour.at
<https://qontour.at>

© 2020