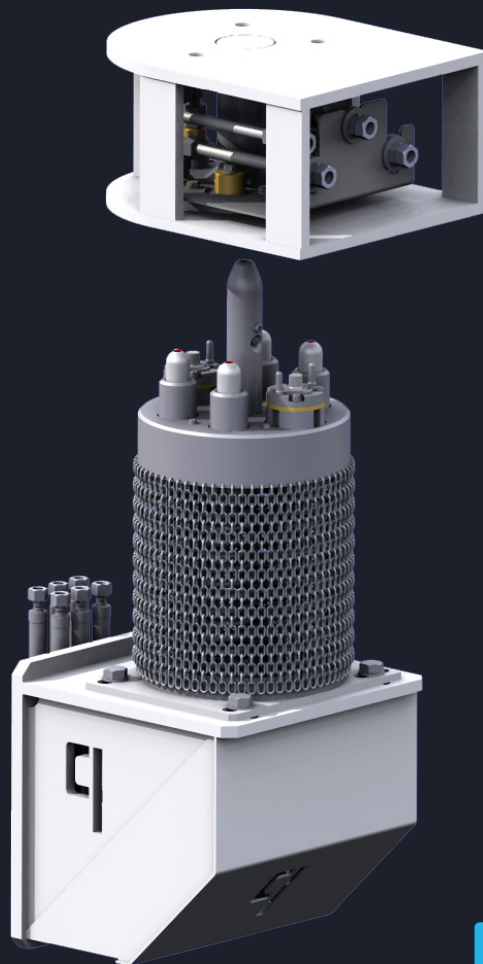




Automatic multi-media coupling system





# geared for safety and multi-functionality

**goupler M** is a patented automatic multi-media coupling system designed to withstand harsh and demanding environments, particularly in steel mills. It automatically delivers various media such as gas, liquids, hydraulics, electrical currents, and signals through a flexible and robust coupling connection.

As an integrated system, **goupler M** not only ensures the supply of various media to ladles containing large volumes of molten steel, but also eliminates the need for personnel to perform manual coupling operations.

**goupler M** is the world's first multi-media coupling system. It embodies qoncept's philosophy of developing innovative solutions that combine production optimisation and operator protection.

” Embark on a journey towards production optimization and safety.  
**Discover the possibilities with goupler M.**

# System Highlights

- Multi-functional and multi-media coupling solution for up to 7 separate supply lines.
- Simultaneously and automatically couples different media such as gas, liquids, hydraulics, electrical currents, and signals.
- Immediately supplies various media without the need for personnel to connect hoses or cables from the supply source.
- High flexibility in all directions to compensate for misalignment between the coupling partners.
- Offers highest coupling reliability and rate due to the spring-loaded system.
- Dust and temperature resistant for use in the harshest environments.



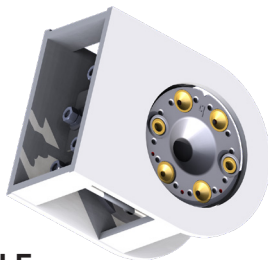
**goupler M** is designed for **multi-functionality** and maintaining the highest level of **operator safety**.



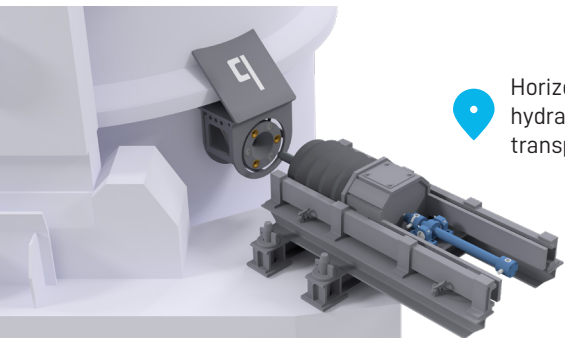
# System Components & Application

**M**  
coupler

**FEMALE SECTION ON LADLE**  
Moving Coupling

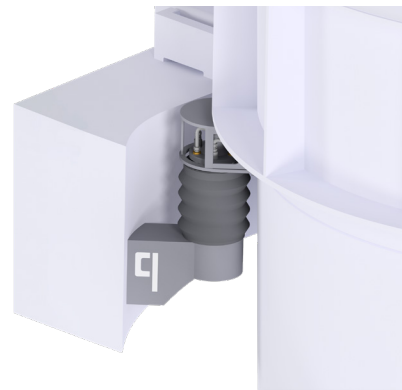


**MALE SECTION**  
Fixed Coupling



Horizontal application for automatic hydraulic connection to mobile transport devices

Application for connecting gas and electrical signals to steel ladles in various installation positions





### Technical Data

PARAMETER		DESCRIPTION
Flexibility		65 mm ( $\pm 2.5$ " ) in all axes
Media	Gas	Ar, N <sub>2</sub> (other gases upon request) max. 25 bar (360 psi) max. 450 °C (850 °F) ambient temperature
	Hydraulics	max. 275 bar (4 000 psi) 150 °C (300 °F) ambient temperature higher values upon request
	Electrics	max. 1 000 V (500 A) 150 °C (300 °F) ambient temperature higher values upon request
	Fluids	Parameters depending on fluid

**goupler M** automatically connects various media when a ladle is placed on a station such as a ladle handling stand, ladle transfer car, ladle furnace, and others. Once installed, there's no need for personnel to manually connect hoses to supply sources.

The female section is attached to the ladle, while the male section is attached to a ladle station. The male and female sections ensure a tight connection when pressed together. The male section is spring-loaded and offers lateral and axial flexibility to ensure a proper connection even when the two sections are not perfectly aligned.



[www.qoncept.at](http://www.qoncept.at)

[www.qoncept.us](http://www.qoncept.us)

[sales@qoncept.at](mailto:sales@qoncept.at)

© 2025