

onsole

Operating terminals



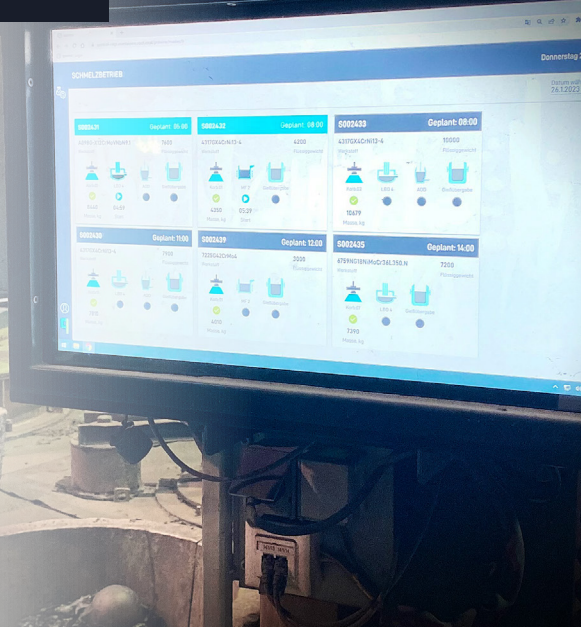
built for resilience, designed for efficiency

qonsole operating terminals enable real-time connectivity and seamless monitoring of manufacturing operations, ensuring efficient management of modern software applications. Built for demanding industrial environments like steel plants, **qonsole** keeps operators informed and up-to-date, boosting production efficiency.

With multi-touch technology, **qonsole** offers effortless operation using fingers, pens, or gloves, all displayed in full HD resolution. Its rugged steel housing and protective glass are designed to endure extreme heat, dust, and dirt, delivering reliable, long-lasting performance in the toughest conditions.


qonsole provides flexible network integration with multiple connectivity and power supply options, ensuring uninterrupted communication throughout the system.

” Reliable, adaptable, and designed to last, stay connected with **qonsole**.



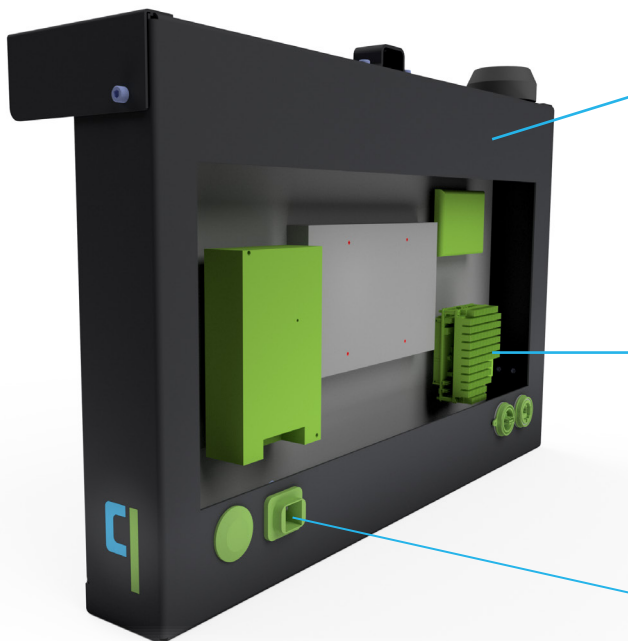
System Highlights

- Multi-touch operating terminal for modern software applications.
- Full HD resolution for clear and precise visuals
- Intuitive touch operation with finger, stylus, or special work gloves.
- Optional satellite terminals for ergonomic setup
- Robust steel housing built for harsh, dusty, or high-temperature environments.
- Network connectivity via Ethernet, Wi-Fi, or LTE+.
- Power options: direct or PoE supply.
- Optional 3 mm replaceable protective glass.
- Integrated industrial PC for reliable performance.
- Fanless, dust-proof design with 3rd-party certification.

The background of the slide is a photograph of an industrial setting, likely a steel mill. It shows large, dark, cylindrical structures and bright orange molten metal being poured or splashed, creating a dramatic, high-contrast scene. The lighting is warm and intense, highlighting the textures of the metal and the industrial environment.

” **qonsole** is built to endure harsh conditions while keeping you up-to-date with your operations.

System Specifications



Display & Housing

Technology: Projected capacitive touch technology (PCAP)

Dimensions: 48.26 cm - 165.1 cm (19 - 65")

Mass: 11.5 - 90 kg (25.35 - 198.42 lbs)

Surface: Powder-coated RAL 5004 (other colors on request)

Software & Hardware

CPU: AMD Ryzen V1000 4x3.6 GHz or better

RAM: 8 - 64 GB

HD: 256 GB - 1 TB SDD / NVMe

Operating System: none, Windows 11 or Linux

Connections & Environment

Power Supply: 110 / 230 VAC or 57 VDC via PoE

Data: Ethernet (CAT6) or USB 2.0

Protection Class: IP 44 or IP 65

Conditions: 0 - 50°C (32°F - 122°F) outside temperature



Durable steel housing with a dust-proof design, built for harsh environments.

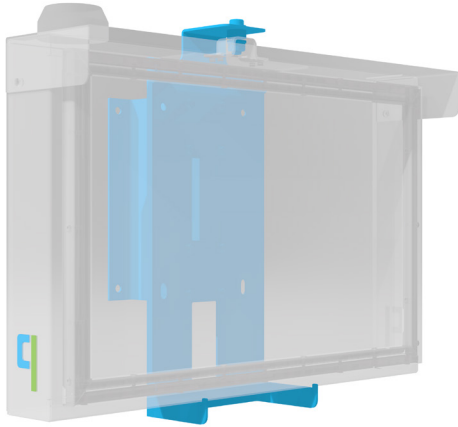


Ethernet, wireless, or cellular connectivity with direct or PoE power options.

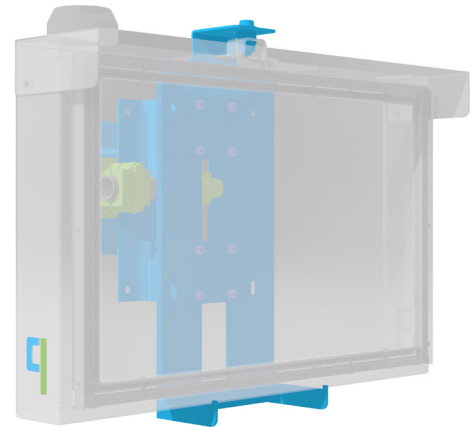


Multi-touch support with glove compatibility and optional satellite terminals.

Mounting Configurations



Rigid Wall Mount



Swivel and Tilt Console

qonsole offers versatile mounting configurations, providing flexible installation options to suit any workspace. It ensures easy adaptation to your environment for optimal use and accessibility.



www.qoncept.at

www.qoncept.us

sales@qoncept.at

© 2025